

# **Streamline your Finance and Supply Chain**

# AGENDA | **WAVE 2 RELEASE - MAIN TOPICS**

## ☐ **Procurement**

- ✓ Sourcing from multiple vendors
- ✓ Supply risk assessment

## ☐ **Warehouse Management**

- ✓ Warehouse App – Searching / Looking up data
- ✓ Warehouse App – Multilevel detours

## ☐ **Manufacturing**

- ✓ Availability of finished goods
- ✓ Equipment monitoring

## ☐ **Product Information Management**

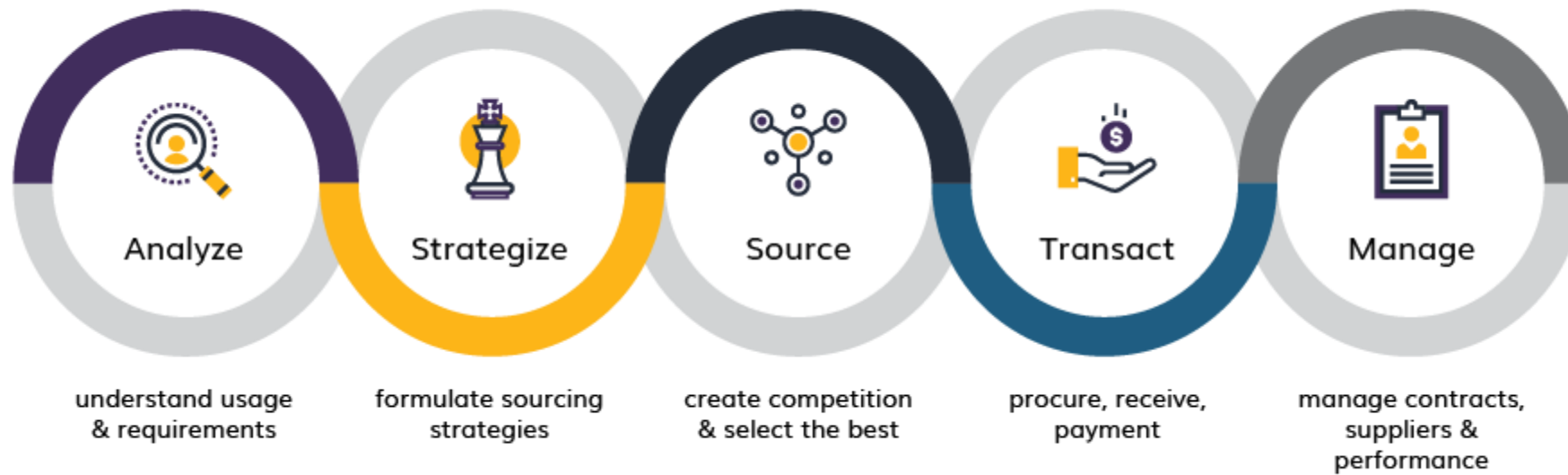
- ✓ Product info in preferred language

## ☐ **Bonus – Cross Application**

- ✓ Increased grid control – Excel functions



# MODULE | PROCUREMENT



# PROCUREMENT | SOURCING FROM MULTIPLE VENDORS

## Features:

- Multivendor sourcing now available under Planning Optimization.
- Ability to establish vendor sourcing ratios, which are applied during master planning.

## Business Value:

- In-memory processing - Improves performance and business scalability.
- Minimized system impact on other processes.
- Near-real-time insights into requirement changes.



## MORE INFORMATION

### Enabled For

Admins, makers, or analysts

### Public Preview

Dec 2022

### General Availability

Feb 2023

### Read More:

<https://learn.microsoft.com/en-us/dynamics365-release-plan/2022wave2/finance-operations/dynamics365-supply-chain-management/source-products-materials-multiple-vendors>

# PROCUREMENT | SUPPLY RISK ASSESSMENT

## Features:

- New dashboard – Supply risk assessment > SRA.
- Provides material managers proper means to:
  - ✓ Better assess supply risks.

## Business Value:

- Allows businesses to optimize their Supply Chains, by identifying:
  - ✓ Bottleneck products.
  - ✓ High-risk areas.
  - ✓ High-risk vendors.
  - ✓ Other risk factors.
- Enables them to take proactive actions to balance cost and resilience.
- Helps them Understand the impact of potential sourcing disruptions, such as:
  - ✓ Shortages
  - ✓ Delays



## MORE INFORMATION

### Enabled For

Admins, makers, or analysts

### Public Preview

Oct 2022

### General Availability

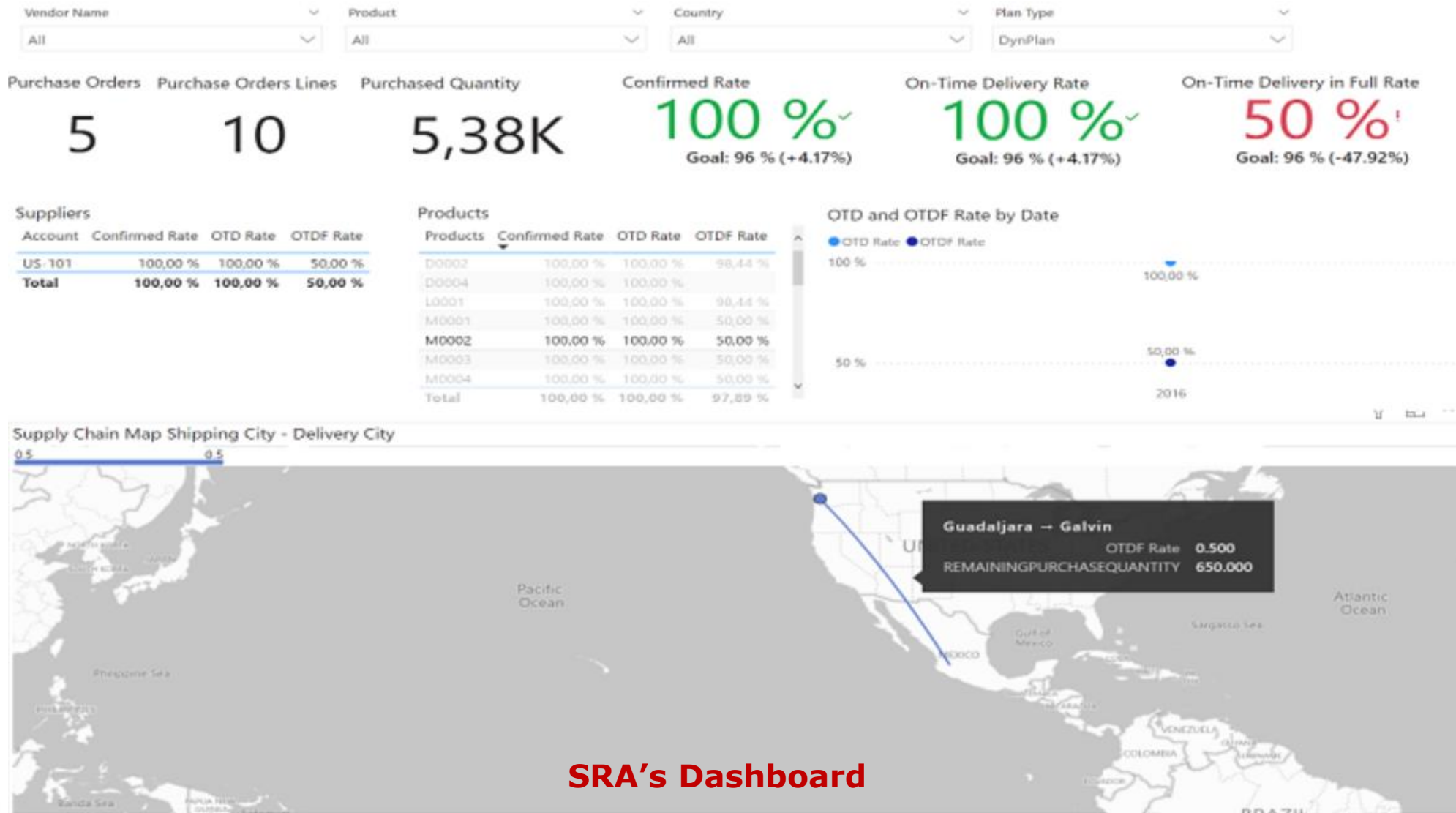
Jan 2023

### Read More:

<https://learn.microsoft.com/en-us/dynamics365-release-plan/2022wave2/finance-operations/dynamics365-supply-chain-management/assess-supply-risks-prevent-supply-chain-disruptions>



# PROCUREMENT | SUPPLY RISK ASSESSMENT



**SRA's Dashboard**

# MODULE | WAREHOUSE MANAGEMENT





# WAREHOUSE MANAGEMENT | ENHANCED SEARCHING

## Features:

- Enhanced search functionality in the Warehouse Management App.
- Search and select related records from a list.
- Avoid manual data entry.

## Business Value:

- Improves speed and accuracy of capturing data.
- Minimizes user error – no manual entries.



Warehouse Management App

Warehouse Management

Lookup POs by vendor

←

Vendor name: Tail\*

00000150	00000151
Purchase order status . . . . . Open order	Purchase order status . . . . . Open order
Vendor name . . . . . Tailspin Parts	Vendor name . . . . . Tailspin Parts
Vendor account . . . . . US-102	Vendor account . . . . . US-102
Delivery date . . . . . 6/15/2022	Delivery date . . . . . 6/17/2022
Document status . . . . . Purchase order	Document status . . . . . None

## MORE INFORMATION

### Enabled For

Admins, makers, or analysts

### Public Preview

Aug 2022

### General Availability

Oct 2022

### Read More:

<https://learn.microsoft.com/en-us/dynamics365-release-plan/2022wave2/finance-operations/dynamics365-supply-chain-management/look-up-relevant-data-within-warehouse-mobile-app>



# WAREHOUSE MANAGEMENT | MULTILEVEL DETOURS

## Features:

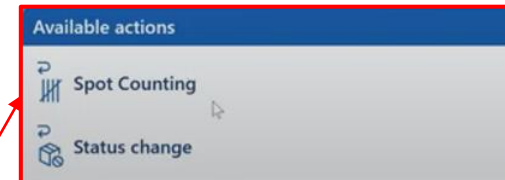
- Enhancing the existing “pause” functionality.
- Define multilevel detours.

**Note:** Out of the box supports two levels of detours. Further levels can be added by customization.

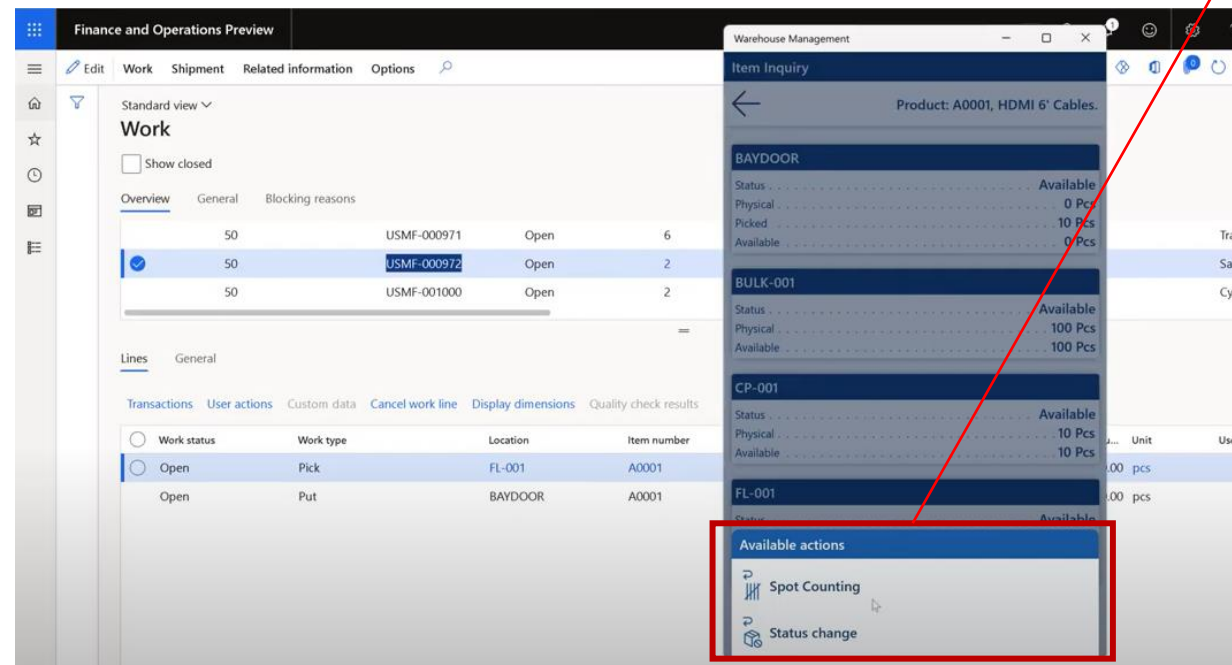
## Business Value:

- Increase the efficiency of warehouse workers.
- Multitasking.

Example:



Warehouse Management App



## MORE INFORMATION

**Enabled For**  
Admins, makers, or analysts

**Public Preview**  
Sep 2022

**General Availability**  
Oct 2022

**Read More:**  
<https://learn.microsoft.com/en-us/dynamics365-release-plan/2022wave2/finance-operations/dynamics365-supply-chain-management/multi-level-detours-warehouse-management-mobile-app>

# MODULE | MANUFACTURING



# MANUFACTURING | FINISHED GOODS' AVAILABILITY

## Features:

- New control to trigger the availability of Finished Goods.

### Two Options:

1. Make finished goods available now, do the postings later.
2. Make finished goods available once the Report-as-Finished is ready.

### Option's 1 results:

System will then generate any required "put away" work, and add the related journal postings to a batch queue to be processed later as system resources allow.

### Option's 2 results:

System will perform all related journal postings in real time. This process may take longer and cause latencies having finished goods timely available.

## Business Value:

- Fixes the latency issues experienced during the report-as-finished process



## MORE INFORMATION

### Enabled For

Admins, makers, or analysts

### Public Preview

Aug 2022

### General Availability

Oct 2022

### Read More:

<https://learn.microsoft.com/en-us/dynamics365-release-plan/2022wave2/finance-operations/dynamics365-supply-chain-management/make-finished-goods-physically-before-posting>

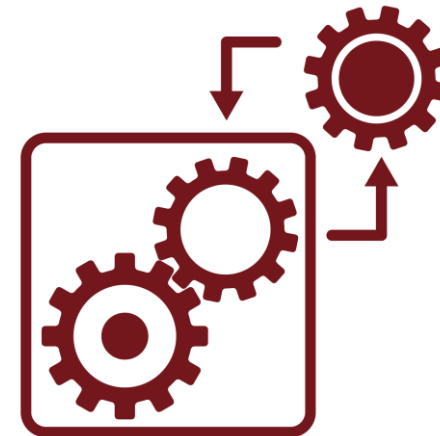
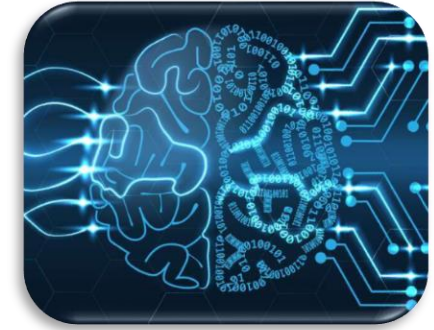
# MANUFACTURING | EQUIPMENT MONITORING

## Features:

- Using Sensor data Intelligence, businesses can now collect further details of machines and equipment such as:
  - ✓ usage
  - ✓ status
  - ✓ downtime
  - ✓ efficiency
  - ✓ maintenance predictions

## Business Value:

- Minimize maintenance costs
- Extend asset life by improving maintenance plans



## MORE INFORMATION

**Enabled For**  
Admins, makers, or analysts

**Public Preview**  
Sep 2022

**General Availability**  
Oct 2022

**Read More:**  
<https://learn.microsoft.com/en-us/dynamics365-release-plan/2022wave2/finance-operations/dynamics365-supply-chain-management/monitor-equipment-sensor-data-intelligence>



# MODULE | **PRODUCT INFORMATION MANAGEMENT**



# PIM | PRODUCT INFO IN PREFERRED LANGUAGE

## Features:

- Product data (names and descriptions) can now be translated into your own language.
- This can be different from the system's language.

## Business Value:

- Maximize your global product exposure.
- Improve global internal efficiency.



## MORE INFORMATION

### Enabled For

Admins, makers, or analysts

### Public Preview

Sep 2022

### General Availability

Oct 2022

### Read More:

<https://learn.microsoft.com/en-us/dynamics365-release-plan/2022wave2/finance-operations/dynamics365-supply-chain-management/display-product-info-users-language>

# MODULE | **CROSS APPLICATION – BONUS** 😊



# Dynamics 365



# CROSS APPLICATION | INCREASED GRID CONTROL

## Features:

- Enhances the current "totals" feature in the grid.
- Allows users to group columns to show:
  - ✓ Minimum value.
  - ✓ Maximum value.
  - ✓ Average value.
- Now, users can also:
  - ✓ Evaluate math expressions (formulas).
  - ✓ Paste multiple values into dynamics at one go.
  - ✓ Check each line status, while pasting is in process.
  - ✓ Freeze columns.

## Business Value:

- Increased user productivity across the organization

Products				
Remove Sales order line Financials Inventory Product and supply Up				
name	Sales category	Quantity	Unit	Adjusted unit price
onD30042"	Television	=10*4*5	ea	0.00000

Group by	Account	Name	Customer g...	Telephone	Credit rating	Credit limit
(3) [Credit rating]						10.00
	US-017	Turtle Wholesales	10	123-555-0168		0.00
	US-041	Dolphin Wholesale	10			10.00
	US-103	Rain Projectors	10	444-555-0110		0.00
Excellent (2) [Credit rating]						900,000.00
	US-010	Sunset Wholesales	10	123-555-0160	Excellent	400,000.00
	US-013	Pelican Wholesales	10	123-555-0165	Excellent	500,000.00
Good (7) [Credit rating]						2,650,000.00
	US-016	Whale Wholesales	10	123-555-0167	Good	250,000.00
	US-019	Sunflower Wholesales	10	123-555-0144	Good	250,000.00
	US-021	Otter Wholesales	10	123-555-0170	Good	250,000.00
	US-024	Yellow Square	10	123-555-0163	Good	250,000.00
	US-003	Forest Wholesales	10	123-555-0159	Good	400,000.00
	US-004	Cave Wholesales	10	123-555-0161	Good	250,000.00
	US-009	Owl Wholesales	10	123-555-0164	Good	1,000,000.00
Poor (1) [Credit rating]						100,000.00
	US-026	Maple Company	10	123-555-0155	Poor	100,000.00
Total					Sum	3,650,010.00
13 rows						

## MORE INFORMATION

**Enabled For**  
Admins, makers, or analysts

**Public Preview**  
Aug 2022

**General Availability**  
Oct 2022

**Read More:**  
<https://learn.microsoft.com/en-us/dynamics365-release-plan/2022wave2/finance-operations/finance-operations-crossapp-capabilities/extended-grid-aggregation-capabilities>

# Questions?